

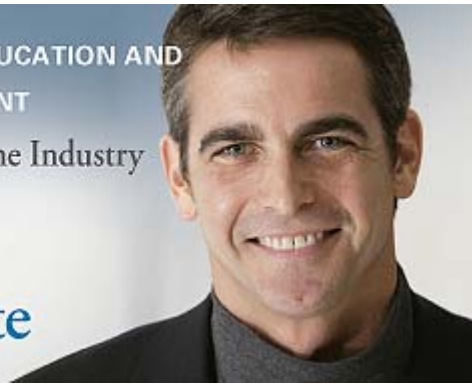


LEARN. ACHIEVE.
SUCCEED.

CENTER FOR INSURANCE EDUCATION AND
PROFESSIONAL DEVELOPMENT

Where Professionals Learn the Industry

Student Program Update



[About
AHIP](#)

[Membership](#)

[Health and
Medicine](#)

[Issues and
Advocacy](#)

[Conferences and Education](#)

[Center for Insurance
Education and Professional
Development](#)

[Consumer
Information](#)

[AHIP Solutions](#)

[AHIP Center for Policy and
Research](#)

[AHIP HI-WIRE](#)

[AHIP Store](#)

August 2008

Log On and Learn How the New System Works

The Center's all-in-one online learning management system (LMS) puts you in charge. It provides the tools you need to manage your own training account. Logging on couldn't be easier. Simply follow these steps:

1. Go to www.AHIPInsuranceEducation.org.
2. Enter your Temporary Login ID into both the "username" and "password" fields.
3. The system will automatically prompt you to change your "username" and "password" to ones you choose.
4. Once completed, you will then have full access to your company's enrollment history—which courses you've taken, which designations you've earned, and more.

If you do not know your Temporary Login ID, e-mail info@InsuranceEducation.org or call 800.509.4422 and the Center's staff will provide you with your ID. To ensure your training history is available to you as a comprehensive record, you must log in to the system using the instructions outlined above. Note: If you register as a new user, your new account will not provide you with access to your training history.

AHM Courses Now Open for Enrollment on the Center's Website

To ensure you have access to a full roster of training options, the Academy for Healthcare Management (AHM) has relocated its courses and exams to the Center's website and LMS. AHM courses include:

- Healthcare Management: An Introduction (AHM 250)
- Governance and Regulation (AHM 510)
- Health Plan Finance and Risk Management (AHM 520)
- Network Management (AHM 530)
- Medical Management (AHM 540)

One website has it all: www.AHIPInsuranceEducation.org, where



For assistance you may call
800.509.4422
or e-mail
info@InsuranceEducation.org.

professionals learn the industry.

Five More States On Board for LTC Partnership Training

Arkansas, Georgia, Nevada, New Jersey, and Oklahoma have approved the Center's training for long-term care (LTC) partnership programs, and several more states are in the approval process, including Arizona, Colorado, Tennessee, Texas, and Wisconsin. Agents interested in pursuing the Long-Term Care Professional (LTCP) designation who have already completed state-approved training are eligible for our accelerated three-course review. The workshop allows you to complete the program, earn the LTCP, and qualify for CE credits in less time and with lower tuition costs. The first course is waived for those who have taken either the Center's LTC Partnership course or received comparable training from another provider. Go to www.AHIPinsuranceeducation.org for more information or contact Margie Barrie at margiebarrie@comcast.net.

Health Insurance E-volved: Fundamentals Courses Go Online

Everyone has a preferred learning style and the Center has you covered with quick, convenient, and flexible ways to learn. In addition to studying independently from a publication, trainer-led workshops, and virtual seminars, two core courses—Fundamentals of Health Insurance, Part A (Basics of Health Insurance) and Fundamentals of Health Insurance, Part B (Basics of Company Operations)—are now being offered in an interactive online format. Just another example of how the Center is evolving to meet the educational needs of industry professionals.

Upcoming AHIP Conferences

2008 Medicare and Medicaid Conferences September 21-25, 2008

Capital Hilton
Washington, D.C.

[Conference Website](#)

Join AHIP at its premier educational conferences on Medicare and Medicaid to get answers on the most challenging fiscal, legislative, and regulatory issues of our time. You'll meet health care leaders and gain insight on best practices at these important meetings in the nation's capital.

Business Forum 2008 November 17-19, 2008

Renaissance Chicago Hotel
Chicago, IL

[Conference Website](#)

For the latest on innovative technologies shaping administrative operations, how web portals can streamline care, which wellness programs increase employee productivity, and much more, you'll want to put this conference on your agenda right now.

HI-WIRE Adds New Links to Industry Resources

If you're like tens of thousands of health insurance professionals who visit [AHIP HI-WIRE](#) regularly, or receive *AHIP HI-WIRE Connection*, the customizable e-mail newsletter delivered to your inbox each day, you understand the value of the news and tools each offers. That's why we think you'll welcome the following new features and functions:

AHIP Community Leadership Awards—Online lets you view slideshows of this year's award winners;

Institute 2008 Special Conference Channel gives you a front row seat at the industry's most exciting event with recaps of news, articles, summaries, and resources;

AHIP HI-WIRE Vault, a searchable index to case studies, best practices, and white papers, makes it easier to find the latest information from authoritative sources; and

Industry Resource Guide, a one-stop shop coming soon, will help you quickly locate vendors with the right solutions to your service and support needs.

Get connected. Visit www.ahiphiwire.org today.

Must-Have Publications and Forms for ECs

You can download these helpful references and forms from the Center's website.

- [Designation Guide](#)
- [Request for Transcript Form](#)
- [Request for Certificate of Completion](#)
- [Student Enrollment Instructions](#)
- [Course Transfer Instructions](#)

[Unsubscribe here.](#)

America's Health Insurance Plans
601 Pennsylvania Avenue, NW
South Building, Suite 500
Washington, DC 20004
202.778.3200

Providing health benefits for over 200 million Americans