



TRAINING THAT GETS NOTICED & GROWS CAREERS

40+ online courses.

15 professional designations.

One trusted authority on health insurance.

Learn. Achieve. Succeed.



ENROLLMENT
ALWAYS OPEN



ONLINE AND
MOBILE FRIENDLY



TECH SUPPORT
BY PHONE & EMAIL

ahip.org/Courses



America's Health
Insurance Plans

Impressive Career Credentials Start Here

AHIP offers 15 different professional designation programs that suit your career goals, schedule, and budget. See which path works for you.

When you enroll, you'll get guidance on your next steps. Easily track your progress along the path. Earn designations by completing between one and five online self-study courses.

DIA Disability Income Associate

DIF Disability Income Fellow

Increase your understanding of the risks and costs associated with disability insurance (DI), and how DI fits into retirement, estate, and long-term care planning. First, earn the DIA designation when you complete three core courses. Then, build on what you've learned! Earn the DIF designation by adding two electives.

- *Disability, Part I (Primer)*
\$195 AHIP Member / \$255 Non-Member
- *Disability, Part II (Advanced Issues)*
\$195 AHIP Member / \$255 Non-Member
- *Disability, Part III (Group and Worksite Issues)*
\$195 AHIP Member / \$255 Non-Member
- Plus two electives

PAHM® Professional, Academy for Healthcare Management

FAHM® Fellow, Academy for Healthcare Management

Master the ins-and-outs of insurance industry need-to-knows. Earn your PAHM designation with AHM250. Then, build from there! Take your career to the next level by earning the FAHM designation. To earn this impressive professional credential, complete these five courses:

- *Healthcare Management: An Introduction (AHM250)*
\$220 AHIP Member / \$280 Non-Member
- *Governance, Legal Issues, Medicare and Medicaid (AHM510)*
\$220 AHIP Member / \$280 Non-Member
- *Health Plan Finance and Risk Management (AHM520)*
\$220 AHIP Member / \$280 Non-Member
- *Network Management (AHM530)*
\$220 AHIP Member / \$280 Non-Member
- *Medical Management (AHM540)*
\$220 AHIP Member / \$280 Non-Member



Affordable courses that are reasonably priced. For even greater ROI, ask about group/bulk discounts.

HCSA Healthcare Customer Service Associate

As consumers continue to become more engaged in health care, this designation is an ideal path to sharpen your problem-solving skills and deliver value to your customers. Start with these required courses and add one elective:

- *Customer Service Strategies for the Health Care Environment*
\$195 AHIP Member / \$240 Non-Member
- *Fundamentals of Health Insurance, Part A (Basics of Health Insurance)*
\$165 AHIP Member / \$215 Non-Member
- *Fundamentals of Health Insurance, Part B (Basics of Company Operations)*
\$165 AHIP Member / \$215 Non-Member
- Plus one elective

LTCP Long-Term Care Professional

Enhance your professional expertise in long-term care insurance (LTCI), including ways to finance long-term care needs, products, claims and administration, through four courses.

- *Long-Term Care, Part I (Needs and Options)*
\$195 AHIP Member / \$255 Non-Member
- *Long-Term Care, Part II (Financing)*
\$195 AHIP Member / \$255 Non-Member
- *Long-Term Care, Part III (The Product)*
\$195 AHIP Member / \$255 Non-Member
- *Long-Term Care, Part IV (Administration and Claims)*
\$195 AHIP Member / \$255 Non-Member

Or earn the LTCP quickly with our comprehensive combined course.

- *Long-Term Care Professional (LTCP)—Combined Course*
\$585 AHIP Member / \$765 Non-Member



Train your team in the basics of long-term care insurance. Ask about our blended learning options for the LTCI program today. Email TrainingSolutions@ahip.org

Featured Courses

Medicare Primer—NEW!

Better-serve your age 65+ members. This new course covers everything you need to know: how Medicare is structured, Parts A-D, eligibility requirements, where private insurance fits in, Medicaid's role, and more.

\$110 AHIP Member / \$150 Non-Member

Healthcare Management: An Introduction (AHM250)

Get up to speed on the basic concepts of our fast-changing industry and the timely topics that matter most to help you better serve your members.

\$110 AHIP Member / \$150 Non-Member

Medicaid Primer

Gain a deeper understanding of Medicaid eligibility, funding, managed care, waivers, and more. It's everything you need to know to master Medicaid.

\$110 AHIP Member / \$150 Non-Member

Health Savings Account (HSA) Expert Certificate

A detailed overview of the HSA planning, administration, best practices, and more. Upon completion of this online course, you'll earn your HSA Expert Certificate.*

\$795 AHIP Member / \$1,095 Non-Member

* 3-year (renewal required) HSA Expert Certification



Meet CMS Training Requirements for Agents and Brokers

- Federal Marketplace Training for Agents and Brokers (*Individual Marketplace Training, Individual Marketplace Training for Returning Agents and Brokers*)
Pricing varies based on options
- Medicare + Fraud, Waste & Abuse Training
Available in English and Spanish
\$175 AHIP Member / \$175 Non-Member
- Continuing Education (CE) Credits
Credit hours per course and fees vary by state

Looking for the Basics?

Start with courses that focus on how health insurance works, core products, and more. Then, build on that foundation with courses that offer even deeper knowledge.

- *Health Insurance 101: An Orientation*
\$80 AHIP Member / \$100 Non-Member

HCAFA

Health Care Anti-Fraud Associate

Develop the expertise to assess and mitigate the impact of fraud. When you earn this designation, you'll signify your mastery of detection, investigation, and prevention methods. In addition to two required courses, choose one elective from a series of on-demand webinars that fit best with your career path.

- *Fraud, Part I (Introduction)*
\$195 AHIP Member / \$240 Non-Member
- *Fraud, Part II (Key Products)*
\$195 AHIP Member / \$240 Non-Member
- Plus one fraud webinar

HIA

Health Insurance Associate®

Master the industry's overarching administration and management principles, as well as in-depth details of policy issue and renewal, government regulation, and fraud. It's a great launch into the basics of health insurance and beyond.

- *Fundamentals of Health Insurance, Part A (Basics of Health Insurance)*
\$165 AHIP Member / \$215 Non-Member
- *Fundamentals of Health Insurance, Part B (Basics of Company Operations)*
\$165 AHIP Member / \$215 Non-Member
- *Health Insurance Advanced Studies, Part A*
\$195 AHIP Member / \$255 Non-Member
- *Supplemental Health Insurance*
\$150 AHIP Member / \$200 Non-Member
- Plus two electives

- *Fundamentals of Health Insurance, Part A (Basics of Health Insurance)*
\$165 AHIP Member / \$215 Non-Member
- *Fundamentals of Health Insurance, Part B (Basics of Company Operations)*
\$165 AHIP Member / \$215 Non-Member
- *Health Insurance Advanced Studies, Part A*
\$195 AHIP Member / \$255 Non-Member
- *Health Insurance Advanced Studies, Part B*
\$195 AHIP Member / \$255 Non-Member

HCP®**Healthcare Compliance Professional**

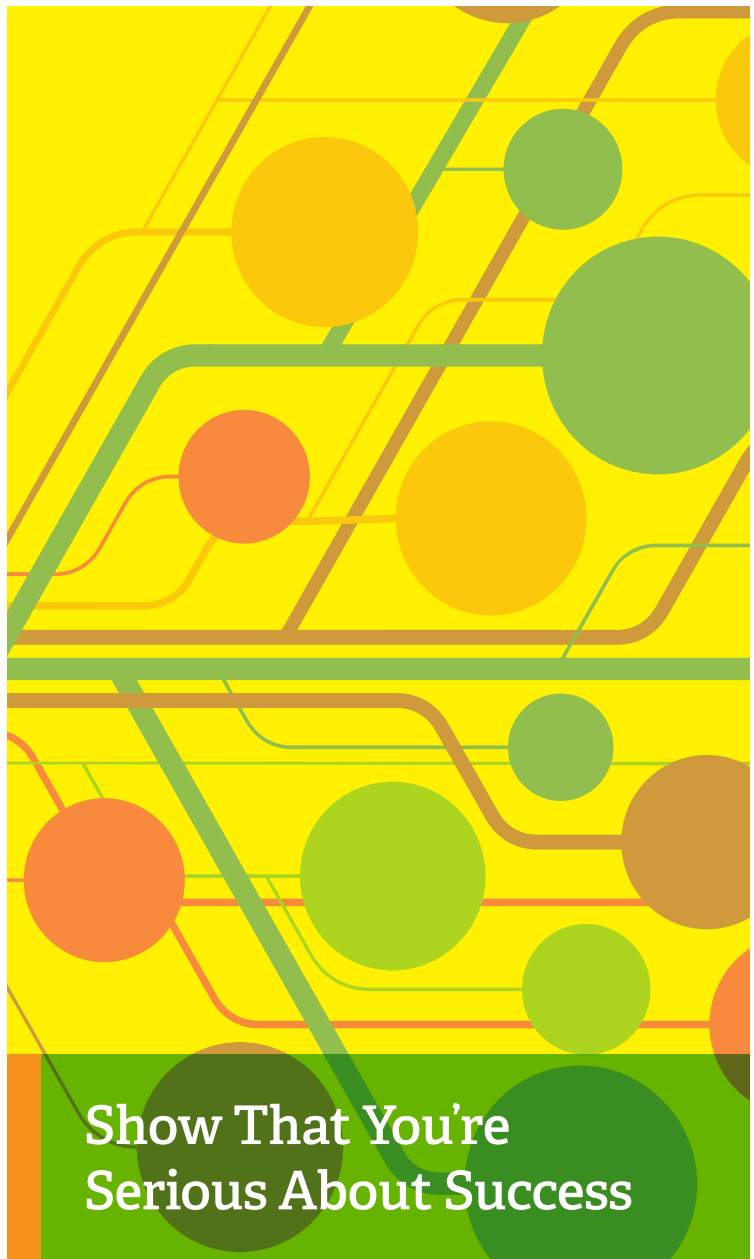
Stay abreast of trends focused on delivering even greater value to consumers. The HCP designation demonstrates your expertise in ensuring that your organization meets rules and regulations, as well as how to establish a solid compliance program.

- *Accountable Care Organizations (ACOs)*
\$110 AHIP Member / \$150 Non-Member
- *Health Insurance Exchanges and the Affordable Care Act (ACA)*
\$110 AHIP Member / \$150 Non-Member
- *Understanding Medicare*
\$110 AHIP Member / \$150 Non-Member
- *Understanding Private Accountable Care Organizations (ACOs)*
\$110 AHIP Member / \$150 Non-Member
- *Understanding the Summary of Benefits and Coverage (SBC)*
\$110 AHIP Member / \$150 Non-Member
- Webinars on-demand also available

ITP**Information Technology Professional**

As health care continues to rely more and more on new technologies, infuse your tech skills with health insurance-specific insights and gain a career edge.

- *Health Insurance 101: An Orientation*
\$80 AHIP Member / \$100 Non-Member
- *ICD-10 and 5010 Mandate—
A Technology View*
\$195 AHIP Member / \$255 Non-Member
- *Overview of Payer IT, Part A*
\$195 AHIP Member / \$255 Non-Member
- *Overview of Payer IT, Part B*
\$195 AHIP Member / \$255 Non-Member
- Webinars on-demand also available



Show That You're Serious About Success

DBA**Dental Benefits Associate**

Earn your DBA designation and demonstrate your expertise in plan design and coverage, plan management, and the impact of fraud and legal requirements.

- *Dental Benefits, Part A: An Overview of Dental Benefits and Dental Plans*
\$155 AHIP Member / \$205 Non-Member
- *Dental Benefits, Part B: A Closer Look at Plan Types and Management*
\$155 AHIP Member / \$205 Non-Member
- *Fraud, Part I (Introduction)*
\$195 AHIP Member / \$240 Non-Member
- *Health Insurance Advanced Studies, Part A*
\$195 AHIP Member / \$255 Non-Member



When It Comes to Health Insurance Education, AHIP Has You Covered



Credentials make all the difference.
AHIP's professional designations are the industry standard.



You've got a full-time job and a finite amount of energy.
Just one exam per course, as well as some one-course, accelerated designations.



Life happens.
Enrolling allows you to learn at your own pace, on your own schedule.



Choices, choices.
Choose from 15 designations, 40+ online courses and webinars, and Continuing Education (CE) credits. Flexible formats that work for you.



Technical Support.
We're here to help you succeed.

PHIAS[®]

Professional, Health Insurance Advanced Studies

Tackle the fundamentals of health insurance and learn how various topics work together in our evolving health care system.

- *Health Insurance Advanced Studies, Part A*
\$195 AHIP Member / \$255 Non-Member

FHIAS[®]

Fellow, Health Insurance Advanced Studies

Expanding on the PHIAS designation, delve more deeply into the health care system's building blocks and products such as Medicare, DI, LTCI, dental, and more.

- *Health Insurance Advanced Studies, Part A*
\$195 AHIP Member / \$255 Non-Member
- *Health Insurance Advanced Studies, Part B*
\$195 AHIP Member / \$255 Non-Member
- Plus one elective

MHP

Managed Healthcare Professional

Gain an understanding of the unique trends, policies, and processes that shape health care, including managed care plan structures, operations, and administration.

- *Fundamentals of Health Insurance, Part A (Basics of Health Insurance)*
\$165 AHIP Member / \$215 Non-Member
- *Fundamentals of Health Insurance, Part B (Basics of Company Operations)*
\$165 AHIP Member / \$215 Non-Member
- *Healthcare Management: An Introduction (AHM250)*
\$220 AHIP Member / \$280 Non-Member
- Plus one elective



For full designation and course descriptions, visit ahip.org/Courses

Training That Gives You Real Credentials

	AHIP MEMBER PRICE	NON-MEMBER PRICE	DESIGNATIONS													
			ITP	HCP®	PHIAS®	FHIAS®	HIA	PAHM®	FAHM®	DIA	DHP	DIF	LTCP	HCAFA	HCSA	MHP
Accountable Care Organizations (ACOs)	\$110	\$150		REQ												
An Introduction to Wellness Programs	\$195	\$255				EL1										
Combating Chronic Diseases through Workplace Wellness Programs	\$195	\$255				EL1										
Customer Service Strategies for the Health Care Environment	\$195	\$240												REQ		
Dental Benefits, Part A: An Overview of Dental Benefits and Dental Plans	\$155	\$205													EL1	REQ
Dental Benefits, Part B: A Closer Look at Plan Types and Management	\$155	\$205														REQ
Disability, Part I (Primer)	\$195	\$255					EL2		REQ	REQ	REQ			EL1		
Disability, Part II (Advanced Issues)	\$195	\$255					EL2		REQ	REQ	REQ					
Disability, Part III (Group and Worksite Issues)	\$195	\$255					EL2		REQ	REQ	REQ					
Enhancing Group LTD with Individual Disability Income Policies	\$80	\$100												EL2		
Federal Marketplace Training for Agents and Brokers	Prices vary with options.															
Fraud, Part I (Introduction)	\$195	\$240					EL2						REQ	EL1	EL1	REQ
Fraud, Part II (Key Products)	\$195	\$240											REQ			
Fraud webinars	Prices vary with options.													EL1		
Fundamentals of Health Insurance, Part A (Basics of Health Insurance)	\$165	\$215					REQ			REQ				REQ	REQ	
Fundamentals of Health Insurance, Part B (Basics of Company Operations)	\$165	\$215					REQ			REQ				REQ	REQ	
Governance, Legal Issues, Medicare and Medicaid (AHM510)	\$220	\$280								REQ						
Health Insurance 101: An Orientation	\$80	\$100	REQ													
Health Insurance Advanced Studies, Part A	\$195	\$255			ONE	REQ	REQ				EL2			EL1	REQ	
Health Insurance Advanced Studies, Part B	\$195	\$255				REQ										
Health Insurance Exchanges and the Affordable Care Act (ACA)	\$110	\$150	REQ													
Health Plan Finance and Risk Management (AHM520)	\$220	\$280								REQ						
Health Savings Account (HSA) Expert Certificate*	\$795	\$1,095														
Healthcare Management: An Introduction (AHM250)	\$220	\$280					ONE	REQ								REQ
ICD-10 and 5010 Mandate—A Technology View	\$195	\$255	REQ													
Long-Term Care, Part I (Needs and Options)	\$195	\$255					EL2				REQ			EL1		
Long-Term Care, Part II (Financing)	\$195	\$255									EL2	REQ				
Long-Term Care, Part III (The Product)	\$195	\$255									REQ					
Long-Term Care, Part IV (Administration and Claims)	\$195	\$255									REQ					
Long-Term Care Professional (LTCP)—Combined Course	\$585	\$765					EL2				EL2	ONE		EL1		
Medicaid Primer	\$110	\$150														
Medical Management (AHM540)	\$220	\$280								REQ						
Medicare + Fraud, Waste and Abuse (FWA) Training — Available in English and Spanish	\$175	\$175					EL1									
Medicare General Compliance Training Program: Understanding Your Role and Responsibilities	\$195	\$255														
Medicare Primer—NEW!	\$110	\$150		REQ		EL1										
Network Management (AHM530)	\$220	\$280								REQ						
Overview of Payer IT, Part A	\$195	\$255	REQ													
Overview of Payer IT, Part B	\$195	\$255	REQ													
Supplemental Health Insurance	\$150	\$200						REQ								
Understanding Private Accountable Care Organizations	\$110	\$150		REQ												
Understanding Social Security Disability Income	\$80	\$100									EL2					
Understanding the Summary of Benefits and Coverage (SBC)	\$110	\$150		REQ												

* 3-year (renewal required) HSA Expert Certification

ONE = Designation is awarded upon completion of single course as shown.

REQ = Required Course

EL1 = Possible of 1 Elective

EL2 = Possible of 2 Electives

AVAILABLE DESIGNATIONS

ITP = Information Technology Professional

HCP = Healthcare Compliance Professional

PHIAS = Professional, Health Insurance Advanced Studies

FHIAS = Fellow, Health Insurance Advanced Studies

HIA = Health Insurance Associate

PAHM = Professional, Academy for Healthcare Management

FAHM = Fellow, Academy for Healthcare Management

DIA = Disability Income Associate

DHP = Disability Healthcare Professional

DIF = Disability Income Fellow

LTCP = Long-Term Care Professional

HCAFA = Health Care Anti-Fraud Associate

HCSA = Healthcare Customer Service Associate

MHP = Managed Healthcare Professional

DBA = Dental Benefits Associate

Register for these courses and more at ahip.org/InsuranceEducation. For details about courses approved for Continuing Education (CE) credits, please visit ahip.org/CECredits

Your Company's AHIP Member Benefits Extend to You

Is your company an AHIP health insurance provider member? If yes, then as an employee, you're a member, too. You can enjoy a long list of member benefits that can help you do better at your job and achieve your professional development goals. These benefits include:

- Access to member only content at ahip.org
- Complimentary member newsletters
- Discounts on AHIP Insurance Education courses
- Conference discounts

To check on your membership status, email MembershipFrontline@ahip.org



AHIP Conferences

Supplement your online coursework by attending AHIP's conferences and events. Throughout the year, AHIP brings together a faculty of industry experts, C-level executives, policymakers, academics, thought leaders, and disrupters to discuss challenges and opportunities facing the nation's health care system. Visit ahip.org/Events to learn more about upcoming AHIP conferences.



Take Your Career—and Expertise—to the Next Level

With 15 professional designations, 40+ online courses and webinars available, pick the path that fits your goals, your schedule, and your budget. See inside for descriptions and details.

Enroll today and get ready to learn, achieve, and succeed.

Visit ahip.org/Courses, call **800.509.4422**
or email Support@AHIPInsuranceEducation.org

